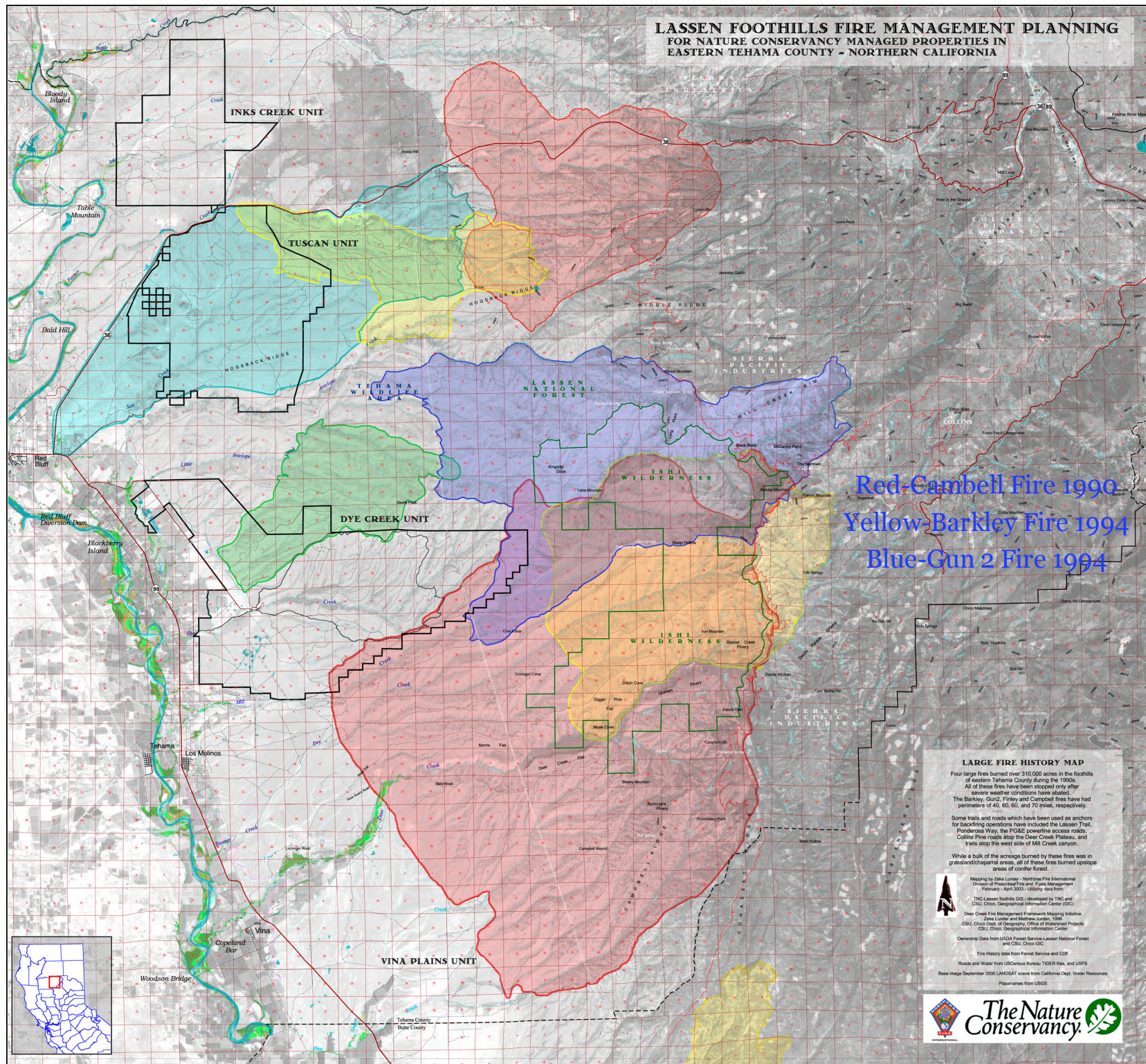


**LASSEN FOOTHILLS FIRE MANAGEMENT PLANNING
FOR NATURE CONSERVANCY MANAGED PROPERTIES IN
EASTERN TEHAMA COUNTY - NORTHERN CALIFORNIA**



Red-Cambell Fire 1990
Yellow-Barkley Fire 1994
Blue-Gun 2 Fire 1994

LARGE FIRE HISTORY MAP

Four large fires burned over 310,000 acres in the foothills of eastern Tehama County during the 1990s. All of these fires have been stopped only after severe weather conditions have abated. The Barkley, Gun 2, Finley and Cambell fires have had perimeters of 40, 60, 60, and 70 miles, respectively.

Some trails and roads which have been used as anchors for backfiring operations have included the Lassen Trail, Ponderosa Way, the FOGIE powerline access roads, Collins Pine roads atop the Deer Creek Plateau, and trails along the west side of Mill Creek canyon.

While a bulk of the acreage burned by these fires was in grassland/chaparral areas, all of these fires burned up slope areas of conifer forest.

Mapping by TNC Center - Northern Fire International
Division of Prescribed Fire and Fire Management
February - April 2003 - Utility data from:
TNC Lassen foothills GIS - developed by TNC and
CSU, Chico, Geographical Information Center (GIC)

Deer Creek Fire Management Framework Mapping Initiative
CSU, Chico and Northern Fire International
CSU, Chico Geographical Information Center
Ownership Data from USFS Forest Service-Lassen National Forest
and CSU, Chico GIC

Fire History data from Forest Service and CDF
Roads and Water from US Census Bureau TIGER files, and USFS
Base image September 2000 LANDSAT scene from California Dept. Water Resources
Place names from USGS

